



# IRSP FIREFLEX

RADIANT HEAT PROTECTING FIRE SHUTTER

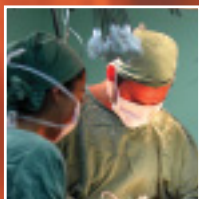
**THE  
'PROTECTIVE'  
SOLUTION**

**IRSP**

INSULATED  
ROLLER SHUTTER  
PRODUCTS

As someone responsible for the safety of others ask yourself . . .

Does  
peace-of-mind  
have  
a  
value?





**Radiant heat protecting fire shutter - protection from combustibility.**

The incredible IRSP Fireflex is an obvious choice for situations where increased risk of fire is a major concern. Fireflex provides a substantial safety barrier between the source of the fire and any precious or dangerously flammable stock. Fireflex is the perfect application for:

- Hospitals
- Shopping centres
- Various industrial applications

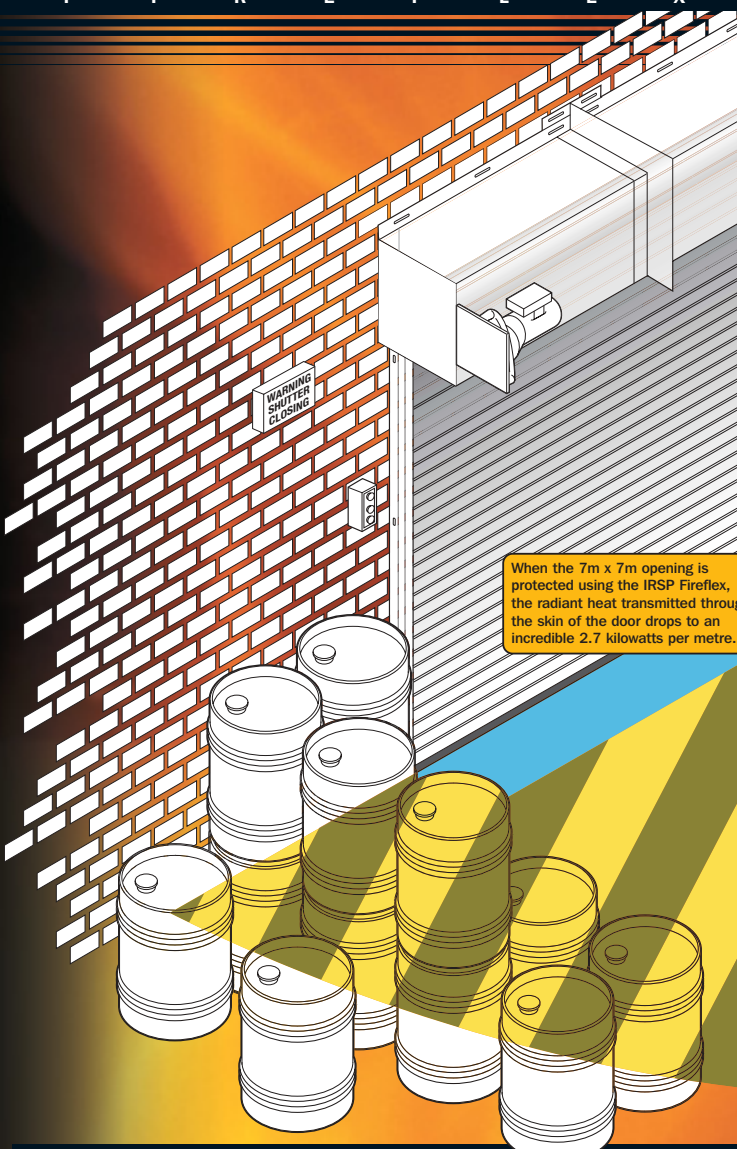
Designed for external or internal applications where increased fire protection is required. It provides incredible radiant heat protection with a sole reliable operation through a simple control panel that can be adapted for a range of activation methods. Safety is of extreme importance when complying with the Provision and Use of Work Equipment Regulations. As with any form of motor driven door, all FIREFLEX shutters are fitted with safety brakes coupled with a suitable drive ratio so as not to activate when the door is closing in controlled descent.

IRSP Fireflex doors are custom made to fit any opening, are available in galvanised steel and can be powder coated to suit any project regardless of its complexity.

IRSP uses the same basic components throughout its range of roller shutter applications. This design ethos means that all of IRSP's doors have been thoroughly tested in a variety of real life situations as well as being extensively tested in our workshops before being made available for sale.

IRSP is a name synonymous with the highest quality door products.

**Tested to BS 476 Part 22: 1987**  
**Test Report 220737**



When the 7m x 7m opening is protected using the IRSP Fireflex, the radiant heat transmitted through the skin of the door drops to an incredible 2.7 kilowatts per metre.

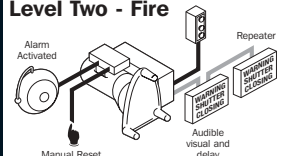
**Recommended Activation Configurations**

**Level One - Fire**



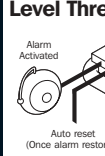
For use when there is no alarm system - but the shutter is required to close in the event of a real fire.

**Level Two - Fire**



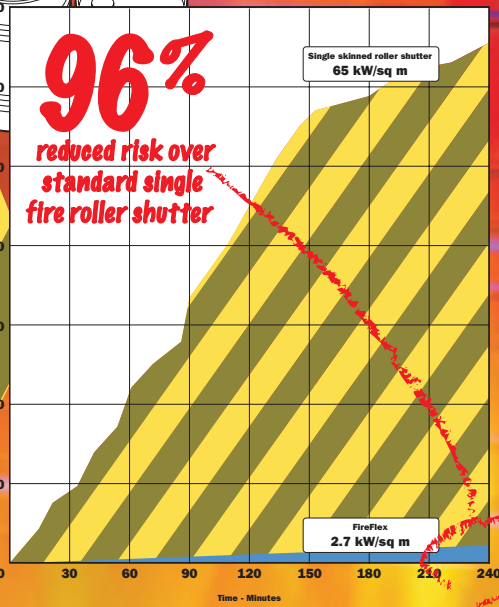
For use when an alarm signal is connected - not in a public area. (24v DC alarm signal required).

**Level Three**

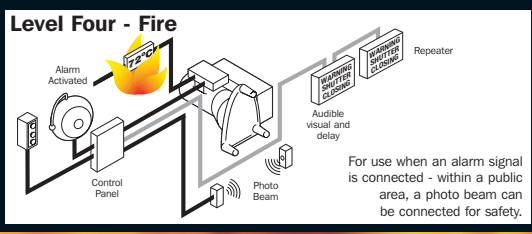
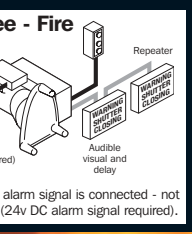


For use when an alarm signal is connected - in a public area.

# Designed and manufactured by IRSP to reduce flash over due to radiant heat



The radiant heat output from a 7m x 7m opening protected with a single standard fire roller shutter is an astounding 65 kilowatts per metre. In the event of a fire people cannot move through this area and combustible items cannot be stored in here.



**IRSP**  
FIREFLEX

**THE PROTECTIVE SOLUTION**

The answer that gives  
you peace-of-mind

# 96%

## Reduced risk!

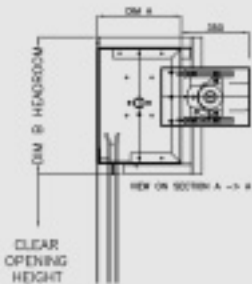
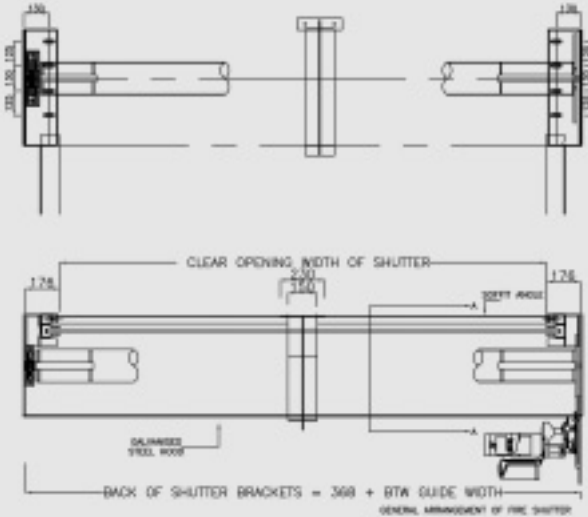
**The IRSP Fireflex will provide an incredible 96% more protection from a radiant heat source than a standard single fire roller shutter.**

What does this mean where it counts? With a fire raging at 1200°C on the other side of a standard fire shutter you wouldn't be able to stand within 6 metres of the opening. This is going to hamper the fire services who arrive to fight the fire and also its going to prevent any people trapped, without a means of escape from passing in front of the red hot door. An incredibly serious and potentially disastrous situation.

Due to its unique and ground breaking construction, the radiant heat levels around the IRSP Fireflex roller shutter door drop from 65kw sq metre to an astonishing 2.7 kw sq metre, this means that combustible materials can be stored half a metre away from a 1200°C inferno, increasing floor space and reducing risk and break down of fire compartmentation. Fire crews can safely tackle the blaze right next to the door, and anyone unfortunate enough to be trapped without an immediate exit can safely walk past the IRSP Fireflex roller shutter, without fear of the radiant heat being as dangerous to them as the fire itself.

These aren't just idle claims! - Exhaustive workshop and independent laboratory testing recently conducted on the IRSP Fireflex, have provided conclusive scientific data to support these figures.

## Technical information



WIDTH	HEIGHT	DIM A	DIM B
2500	2500	430	525
3000	3000	500	705
4000	4000	500	705
5000	5000	550	755
6000	6000	600	805
7000	7000	650	855

All Dimensions in mm

Authorised Dealer:

Manufactured by

## INSULATED ROLLER SHUTTER PRODUCTS

Whitehall Industrial Park • Whitehall Road • Great Bridge  
West Midlands • DY4 7JU • England

Tel: 0121 522 4748 • Fax: 0121 520 0535  
E-mail: sales@irsp.co.uk • Web: www.irsp.co.uk

A Division of P&D Group Services Ltd

# IRSP

## PRODUCT RANGE

Why not choose one of the high quality products in the IRSP range



### SECUREFLEX

IRSP Secureflex dramatically increases the amount of time a burglar, using high speed cutting equipment, has to spend entering the building. Secureflex offers complete protection for your stock, increase your security and could lower your insurance premiums.



### INSUFLEX

Insulated shutters suit a wide variety of applications, from small security shutters to large warehouse openings, where energy efficiency and a high level of security is required.



### SPEEDFLEX

The high speed, speedflex 550 is the most economic solution for frequently used building access, combining security with speed, in just one construction.



### STEELFLEX

A simple design, and minimum number of components, offering an efficient, easy to install solution for your door requirements.



### PRODUCT TESTING

Now, through extensive laboratory and workshop testing combined with exhaustive safety analysis, we can demonstrate that our products satisfy the legal, safety and performance requirements of the directive, and are therefore approved for use in all European member countries.



### COMPONENTS

All IRSP doors and component are manufactured under a rigid in-house quality programme to provide customer satisfaction. All equipment carries a warranty against defects in material and workmanship.

Our policy of constant research and development allows IRSP to offer unlimited design options and unrivalled product performance, all IRSP products have undergone rigorous testing to make sure that they not only pass, but exceed current industrial standards.